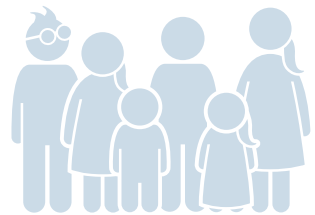
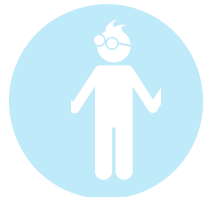




IT TAKES A  
**VILLAGE**

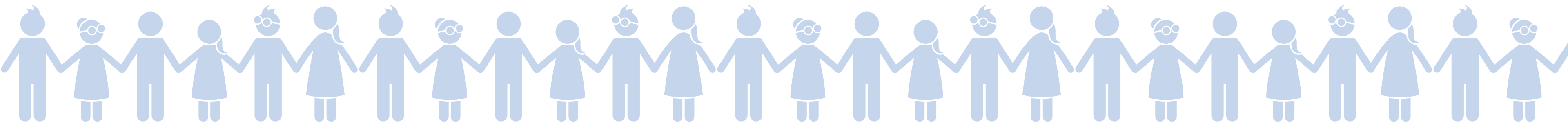
# SURVEY RESULTS

**56% OF PARENTS  
REPORTED THEIR  
CHILDREN EXPERIENCED  
ANXIETY OR OTHER  
MENTAL HEALTH  
DIFFICULTIES**



# SURVEY RESULTS

**95%** OF TEACHERS &  
**100%** PRINCIPALS HAVE  
NOTICED A RISE IN  
MENTAL HEALTH  
CONCERNS AMONG  
STUDENTS IN THEIR  
SCHOOL




# SURVEY RESULTS

**56% OF PARENTS FEEL  
THESE ISSUES HAVE  
BEEN EXASPERATED BY  
THE PANDEMIC**



# SURVEY RESULTS

ONE 3RD SOUGHT  
MENTAL HEALTH BUT OF  
THOSE ONLY A SMALL  
PROPORTION OF  
INDIVIDUALS FELT THIS  
MET THE NEEDS OF  
THEIR CHILDREN

A background graphic featuring a large, light blue circular arrow that curves clockwise. Overlaid on this are several stylized human figures in shades of blue and grey. One figure is a woman, another is a man, and there is a group of three figures representing a family. The figures are semi-transparent and positioned behind the text.

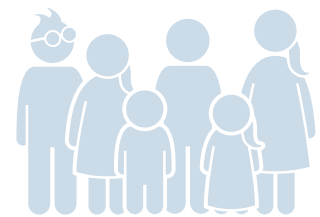
# SURVEY RESULTS

**A SIGNIFICANT NUMBER OF  
INDIVIDUALS FOUND IT  
DIFFICULT TO ACCESS MENTAL  
HEALTH ASSISTANCE DUE TO:**

**38% LONG WAIT TIMES**

**21% LACK OF ACCESSIBILITY**

**21% FINANCIAL CONSTRAINTS**



The background features a central graphic composed of several overlapping, curved, swoosh-like shapes in various shades of blue. Scattered around these shapes are several circular icons: a girl, a boy, a group of five people, a boy with glasses, and a girl with glasses. There are also several small, solid blue circles of varying sizes.

[www.ittakesavillagegreystones-delgany.ie](http://www.ittakesavillagegreystones-delgany.ie)